

**Biomarcatori cardiaci**  
*L'impegno di Roche Diagnostics  
continua*



## ■ Elecsys® Troponina T hs

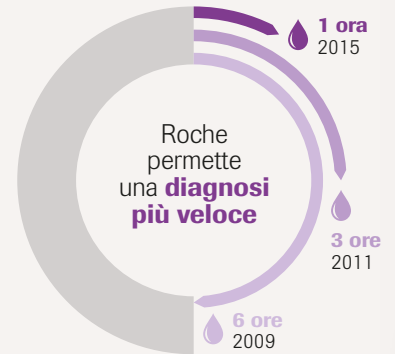
La prima Troponina hs: elevata accuratezza diagnostica per la sindrome coronarica acuta



Algoritmo 0/1 h  
validato clinicamente  
(studio TRAPID-AMI)<sup>1</sup>



Maggiore valore prognostico  
rispetto a Troponina I<sup>2</sup>



## ■ Elecsys® NT-proBNP

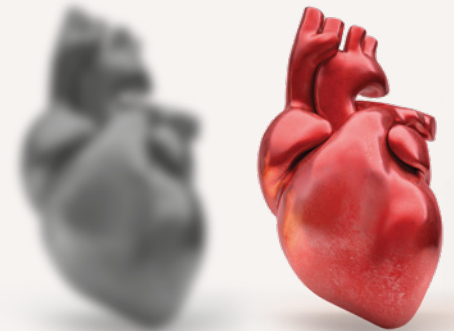
Da 15 anni il biomarcatore «Gold Standard» per lo scompenso cardiaco<sup>3</sup>



Adatto a tutti i pazienti  
indipendentemente  
dalla terapia<sup>4,5</sup>



Cut-off validati  
clinicamente<sup>6-12</sup>



## ■ Elecsys® GDF-15

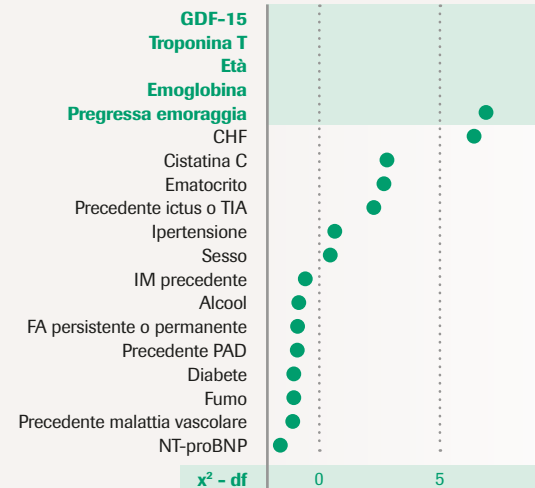
Biomarcatore innovativo per la fibrillazione atriale



ABC Risk score  
clinicamente validato<sup>13</sup>






Significativo fattore  
predittivo di rischio  
emorragico<sup>13</sup>





## Consolidata Tecnologia ECL

*(ElettroChemiLuminescenza)*

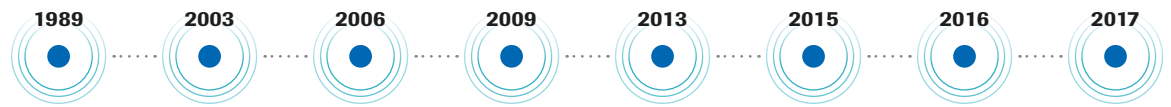
-  Minimo volume di campione
-  Tempi ridotti per il primo risultato
-  Elevata precisione e affidabilità





## Pionieri nei biomarcatori cardiaci

Roche ha aperto la strada per lo sviluppo di TnT, NT-proBNP e GDF-15



### Biomarcatori sviluppati

Troponina-T      NT-proBNP      Troponina T - hs      GDF-15      Troponina-T 5 Gen (USA)

### Pubblicazioni chiave

ICON<sup>5</sup>      APACE<sup>13</sup>      Pre-HAP<sup>14</sup>      TRAPID-AMI<sup>1</sup> NSTEMI I<sup>14</sup>      PARADIGM-HF<sup>4</sup> ABC Bleeding Risk<sup>12</sup>      Valutazione economica algoritmo 1-hr<sup>16</sup>

### Sostegno delle linee guida

Linee guida 2015 NSTE ESC<sup>2</sup>      Linee guida 2016 ESC HF<sup>15</sup>      ACC/AHA/HFSA 2017 Linee guida<sup>17</sup> (update)

### Nuove indicazioni

GDF-15 - ACS & HF\* Stratificazione del rischio      GDF-15- AF\* Bleeding Risk

\* ACS = Acute Coronary Syndrome -Sindrome Coronarica Acuta  
 HF = Heart Failure - Scompenso Cardiaco  
 AF = Atrial Fibrillation - Fibrillazione Atriale

### Bibliografia

- 1 Mueller, C. et al. (2016) *Ann Emerg Med* (68); 76-87
- 2 Roffi, M. et al (2016) *Eur Heart J* 37(3):267-315
- 3 McKie, PM., et al. (2016). *J Am Coll Cardiol* 68(22), 2437-2439
- 4 Zile et al. (2016) *J Am Coll Cardiol* 68:2425-2436, 4:
- 5 Januzzi, J.L. (2016) *Jr. Clin Chem.* 62(5):663-5
- 6 Taylor et al. (2017). *Br J Gen Pract.* 2017 Feb; 67(655), e94 – e102
- 7 Januzzi et al. (2018). *J Am Coll Cardiol* 71(11), 1191 – 1200
- 8 Taylor et al. (2017). *Efficacy and Mechanism Evaluation, No. 4.3. National Institute for Health Research. ISSN 2050-4365.* [Accessed on January 2018, 23rd]
- 9 *British Heart Foundation and the All-Party Parliamentary Group on Heart Disease (2016). Focus on Heart Failure. Report accessible on <https://www.bhf.org.uk/get-involved/campaigning/inquiry-into-living-with-heart-failure>* [Accessed on January 2018, 23rd]
- 10 Hildebrandt et al. (2010). *Eur Heart J.* 31(15), 1881 – 1889
- 11 Januzzi et al. (2006). *Eur Heart J.* 27(3), 330 – 337
- 12 Hijazi, Z. et al. (2016) *Lancet* 387, 2302-2311
- 13 Reichlin, T. et al. (2012) *Arch Intern Med* 172:1211-8
- 14 Stengaard, C. et al (2013) *Am. J. Cardiol.* 2013; 112:1361-6
- 15 Ponikowski, P. et al. (2016) *Eur Heart J* 37(27): 2129-2200
- 16 Ambavane, A. et al. (2017) *Plos One* 12(11):e0187662
- 17 Yancy, CW. et al (2017) *Circ*

© 2018 Roche

Roche Diagnostics SpA  
 Viale G.B. Stucchi, 110  
 20900 Monza (MB)

[www.cobas.roche.it](http://www.cobas.roche.it)